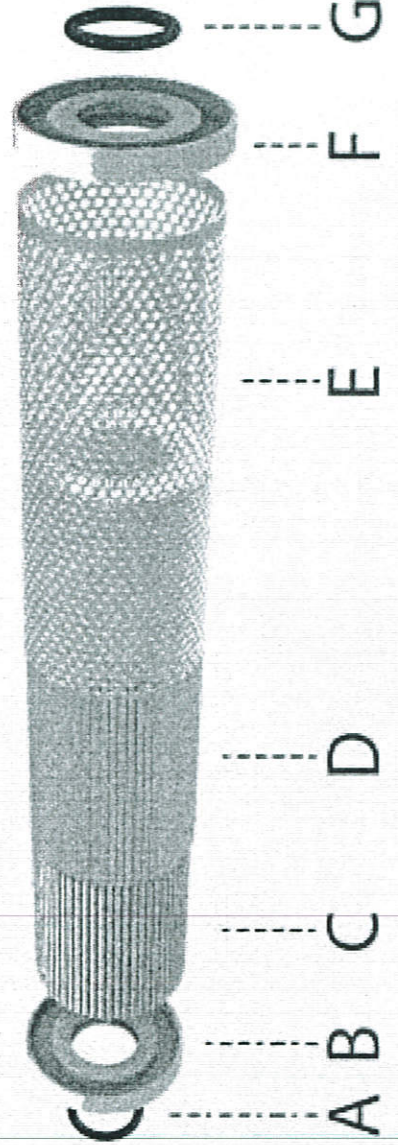
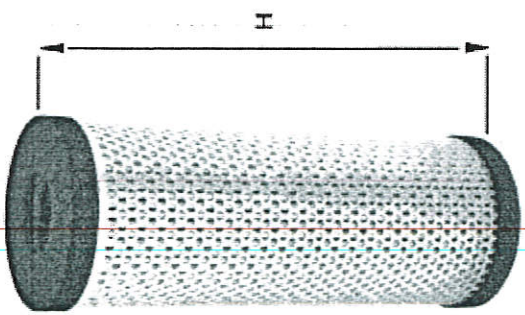


نقشه تحقیقاتی



Tolerances According to ISO 2768 - F
UNLESS OTHERWISE SPECIFIED:

Linear	0.5-3	± 0.05	3-6	± 0.1	6-30	± 0.15	30-120	± 0.2	120-400	± 0.3	400-1000	± 0.5	1000-2000	± 1	>2000-4000
Angular	$\pm 1^\circ$	$\pm 0^\circ 30'$	$\pm 0^\circ 20'$	$\pm 0^\circ 10'$	$\pm 0^\circ 5'$	$\pm 0^\circ 5'$	>10	>10-50	>50-120	>120-400	>400	Debur and Break all sharp edges 0.5mm chamfer/radius max			

NAME	SIGNATURE	DATE	SURFACE FINISH:	HARDNESS:	COATING:
DRAWN	I.Rafierad	1405/02/08			
CHK'D	M.Amini	1405/02/08	REVISIONS		
APP'Y'D	A.Kamali	1405/02/08	Revision	Date approved	Approver

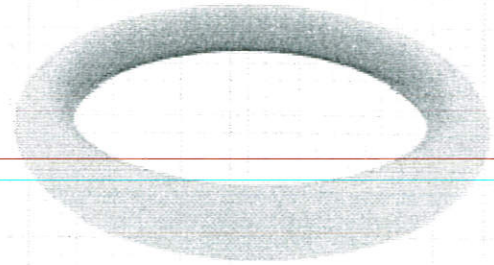
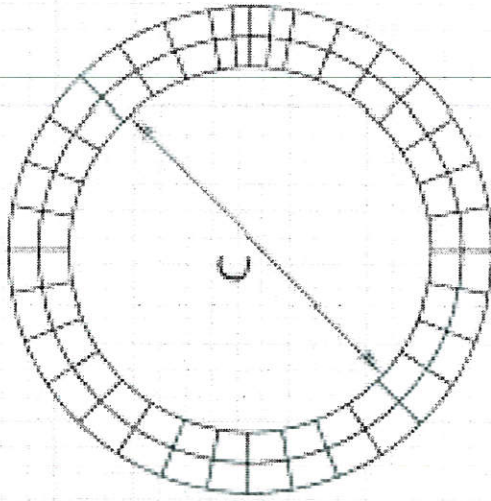
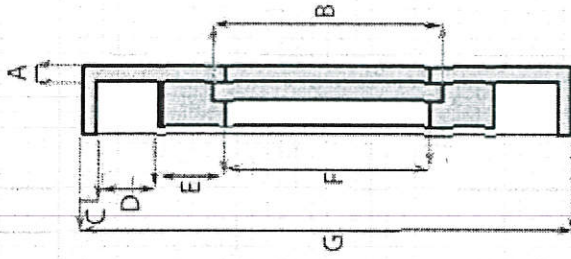
Unit: mm	MAT:	WEIGHT:	QUANTITY
TITLE:	JLQ16F2	RAK	1
Part ID:	7010350010		A4
Description:	Torbocharger oil filter		
SCALE:	1:5		

9147

Handwritten signature

Handwritten mark

BE



ORING

Dimensions Materials

3.5 ± 0.2 MM
 46 ± 0.2 MM
 39 ± 0.2 MM

NBR Oring
 65 - 75 dha
 Tensile Strength 8-10 mpa
 max volume increase 10 - 20 %
 netter : with Isiri 2525 for oil filter
 oring

A B C D E F G H I J K L M

نقشه تحقیقاتی

Tolerances According to ISO 2768 - F

UNLESS OTHERWISE SPECIFIED:

Linear	0.5-3	>3-6	>6-30	>30-120	>120-400	>400-1000	>1000-2000	>2000-4000
	±0.05	±0.05	±0.1	±0.15	±0.2	±0.3	±0.5	±1
Angular	~10	>10-50	>50-120	>120-400	>400	Debur and Break all sharp edges 0.5mm chamfer/radius max		
	±1°	±0°30'	±0°20'	±0°10'	±0°5'			

NAME	SIGNATURE	DATE	SURFACE FINISH:	HARDNESS:	COATING:
DRAWN	I.Rafiehd	1405/02/08			
CHECKED	M.Amini	1405/02/08			
APPROVED	A.Kamali	1405/02/08			

REVISIONS

Revision	Description	Date approval	Approver

Unit: mm MAT: JLQ16F2 WEIGHT: QUANTITY 1

TITLE:

JLQ16F2



Part ID:

7010350010

A4

Description:

Torbocharger oil filter

SCALE:1:5

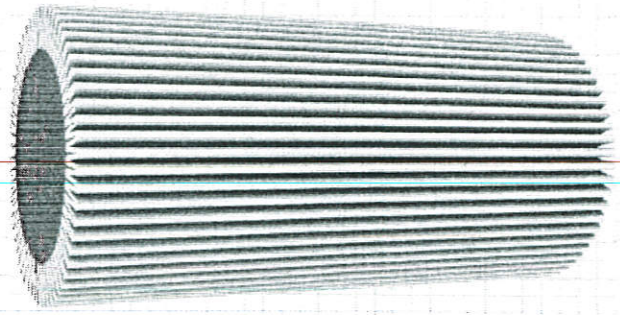
SHEET 3 OF 5

Handwritten signature and date: 31/1/17

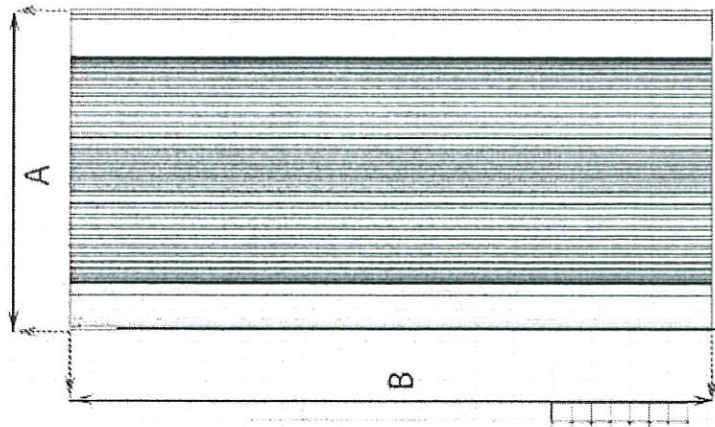
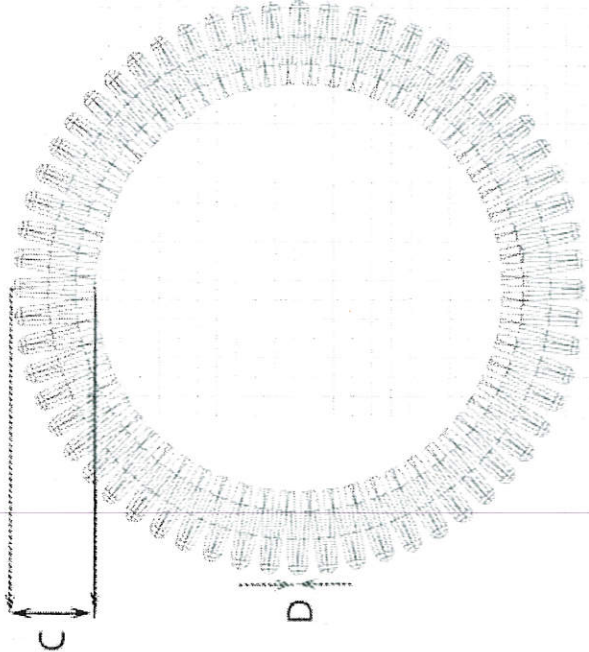
Dimensions Materials

A	87 ± 0.5 MM	Stainless steel dual weave)
B	235 ± 0.5 MM	main layer mesh 700 in ²
C	16 ± 0.5 MM	(double mesh) supporter in ²
D	3 ± 0.2 MM	mesh 24-40 (single)
E		permeability 300-350
F		efficiency <30
G		<20
H		average pore size 20
I		micron Fold number 63-65
J		Fold
K		NOTICE: WITH ISIRI 2525 FOR OIL
L		FILTER
M		

MEDIA



Handwritten signature and initials in blue ink.



نقشه تحقیقاتی

Tolerances According to ISO 2768 - F
UNLESS OTHERWISE SPECIFIED:

Linear	0.5-3	>3-6	>6-30	>30-120	>120-400	>400-1000	>1000-2000	>2000-4000	
	±0.05	±0.05	±0.1	±0.15	±0.2	±0.3	±0.5	±1	
Angular	±1°	±0°30'	±0°20'	±0°10'	±0°5'	Debur and Break all sharp edges 0.5mm chamfer/radius max			

NAME	SIGNATURE	DATE	SURFACE FINISH	HARDNESS	COATING
I.Rafiead		1405/02/08			
M.Amini		1405/02/08			
A.Kamali		1405/02/08			

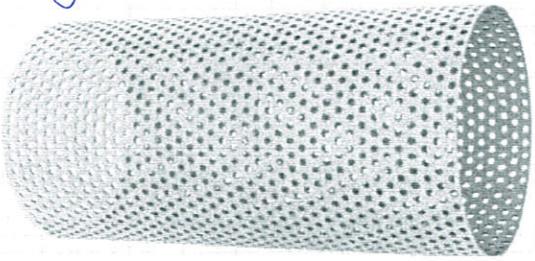
Unit: mm	MAT:	WEIGHT:	QUANTITY	1
TITLE:	JLQ16F2	RAK		
Part ID:	7010350010			A4
Description:	Torbochager oil filter			
SCALE:1:5	SHEET 3 OF 5			

Dimensions Materials

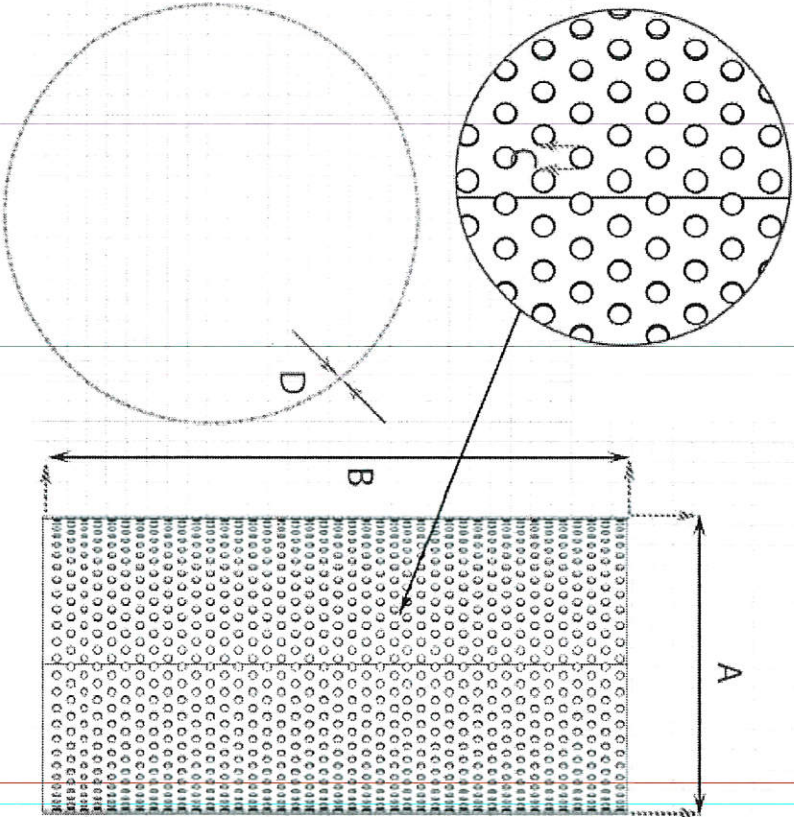
A	88 ± 1 MM	Stainless steel
B	235 ± 1 MM	Thickness 0.7 - 0.8 mm
C	5 ± 0.1 MM	(code : sus 304)
D	0.7 ± 0.1 MM	
E		
F		
G		
H		
I		
J		
K		
L		
M		

نقشه تحقیقاتی

EXTERNAL METAL NET



Handwritten signature in blue ink.



Tolerances According to ISO 2768 - F
UNLESS OTHERWISE SPECIFIED

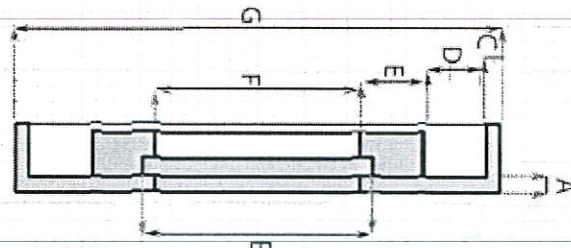
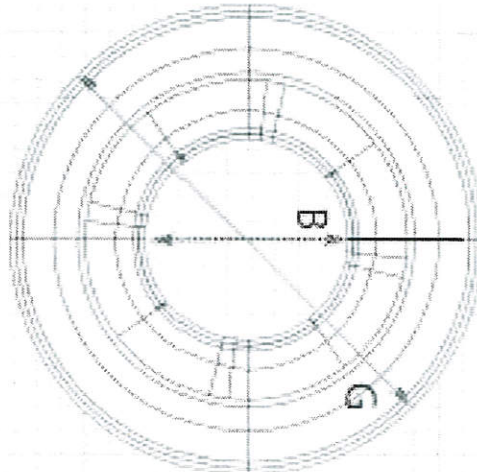
Linear	0.5-3	-3-6	-6-30	>30-120	>120-400	>400-1000	>1000-2000	>2000-4000
	±0.05	±0.05	±0.1	±0.15	±0.2	±0.3	±0.5	±1
Angular	~10	>10-50	>50-120	>120-400	>400	Debur and Break all sharp edges 0.5mm chamfer/radius max		
	±1°	±0°30'	±0°20'	±0°10'	±0°5'			

NAME	SIGNATURE	DATE	SURFACE FINISH:	HARDNESS:	COATING:
1.Rafiqad		14/05/02/08			
CHKD	M Amini	14/05/02/08	REVISIONS		
APPRVD	A.Karnali	14/05/02/08	Description	Date approved	Apprve

Unit	mm	MAT.	WEIGHT:	QUANTITY	1
TITLE:	JLQ16F2				
Part ID:	7010350010				
Description:	Torbocharger oil filter				
SCALE:	1:5				
	SHEET 4 OF 5				



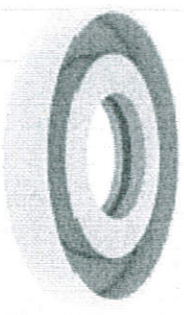
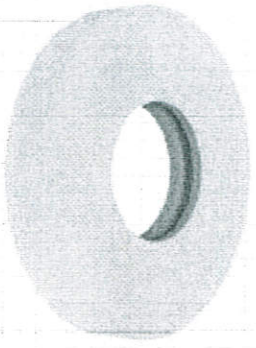
AF



#	Dimensions	Materials
A	4	Aluminium (anodize) Thickness 3 mm black plating
B	46 ± 1 MM	
C	2 + 0.5 MM	
D	20 ± 0.5 MM	
E	5 ± 0.5 MM	
F	40 - 0.3MM - 0.25MM	
G	94 - 1MM	

نقشه تحقیقاتی

UP & DOWN CAP



Handwritten signature and initials in blue ink.

Tolerances According to ISO 2768 - F
UNLESS OTHERWISE SPECIFIED:

Linear	0.5-3	±0.05	±0.05	±0.1	±0.15	±0.2	±0.3	±0.5	±1
Angular	±1°	±0°30'	±0°20'	±0°10'	±0°5'	Debur and Break all sharp edges 0.5mm chamfer/radius max			

DRAWN	1/Rafard	SIGNATURE	DATE	1405/02/08	SURFACE FINISH:	HARDNESS:	COATING:
CHK'D	M Amiri			1405/02/08			
APP'VD	A Karamli			1405/02/08			

Unit:	mm	MAT:		WEIGHT:		QUANTITY:	1
TITLE:	JLQ16F2						
Part ID:	7010350010						
Description:	Torbocharger oil filter						
SCALE:	1:5						
	SHEET 2 OF 5						



A4